

Fig. 2. Atmospheric $\Delta^{14}\text{C}$ levels, derived from tree rings, between 1820 and 1954. Single-year determinations are given, except for the 1890–1915 interval (Table 1). The vertical bar denotes one standard deviation. $\Delta^{14}\text{C}$ levels of the 1895–1915 interval probably give an upper limit only (see text).

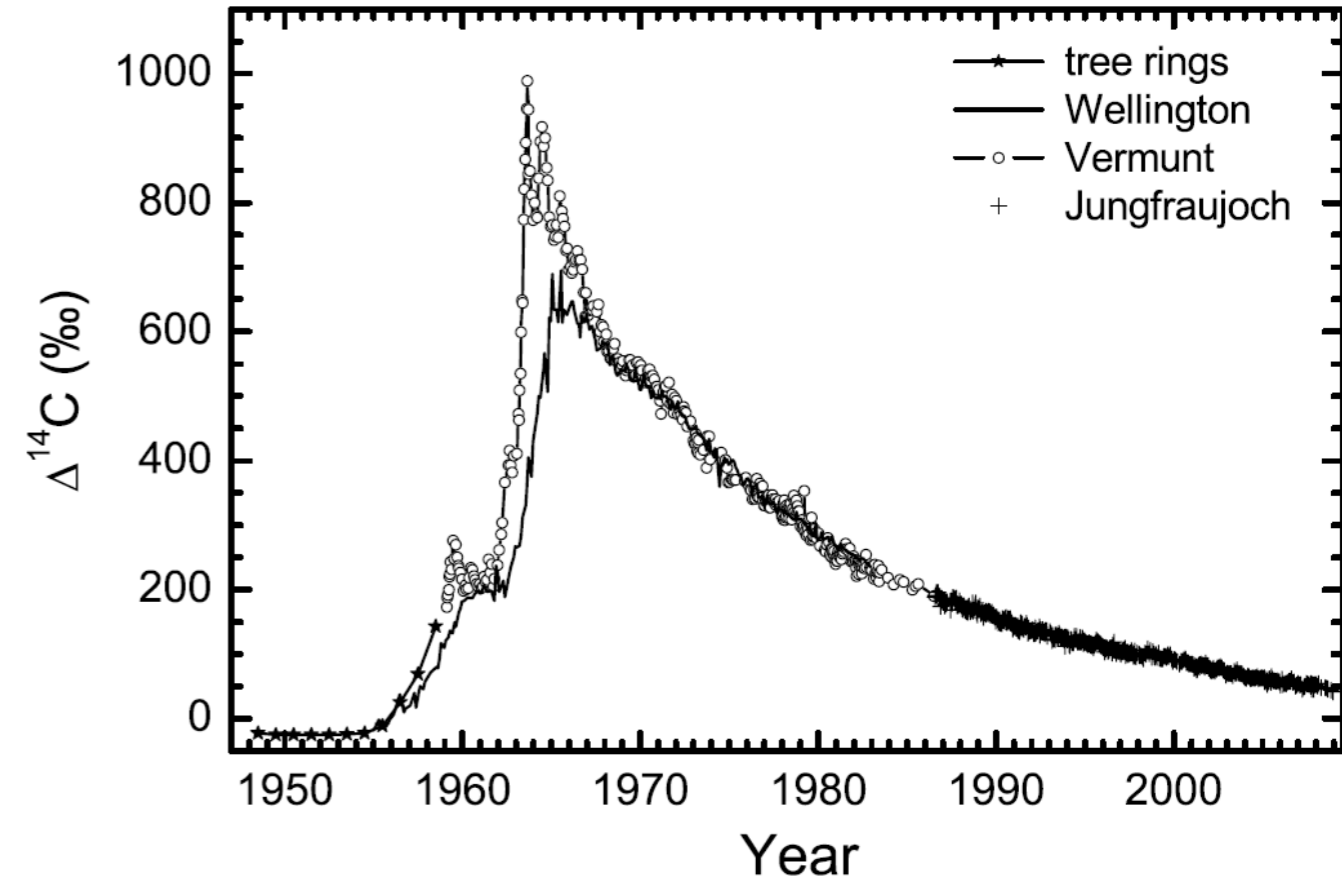


Fig. 2. Temporal change of observed atmospheric $\Delta^{14}\text{CO}_2$ in the northern and the southern hemisphere. The (northern hemispheric) tree-ring data were taken from Stuiver and Quay (1981) and Hua and Barbetti (2004). The early Wellington data (Southern Hemisphere) was taken from Manning et al. (1990).