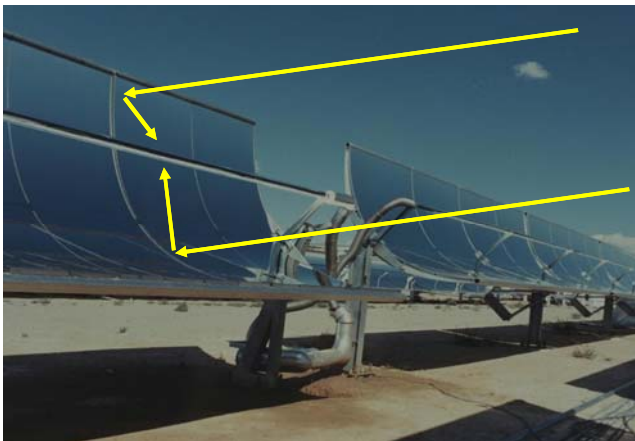


Plantas Solar Electricity Generating System - California

Unit	I	II	III	IV	V	VI	VII	VIII	IX
Capacity Net MW	13,8	30	30	30	30	30	30	80	80
Land Area, hectares	29	67	80	80	87	66	68	162	169
Solar Field Outlet Temperature, °C	307	321	349	349	349	391	391	391	391
Pressure, bar	35,3	27,2	43,5	43,5	43,5	100	100	100	100
Temperature, °C	415	360	327	327	327	371	371	371	371
Solar Field Thermal Efficiency, %	35%	43%	43%	43%	43%	43%	43%	53%	50%
Solar-to-Net Electric Efficiency, %	9,3%	10,7%	10,2%	10,2%	10,2%	12,4%	12,3%	14,0%	13,6%
Net Electricity Production, GWh/yr	30,1	80,5	91,3	91,3	99,2	90,9	92,6	252,8	256,1

TOTAL
353,8 MW
8,08 km²

11,4%
1,08 TWh/yr



Fuentes: Sandia National Laboratory



Aerial view of the solar power stations SEGS III to VII (Solar Electric Generating Systems), KJC, Kramer Junction, California, with an installed capacity of 30 MW each.

CAMPO DE
 COLECTORES SOLARES

